



2019 Flood Disaster Relief Resources

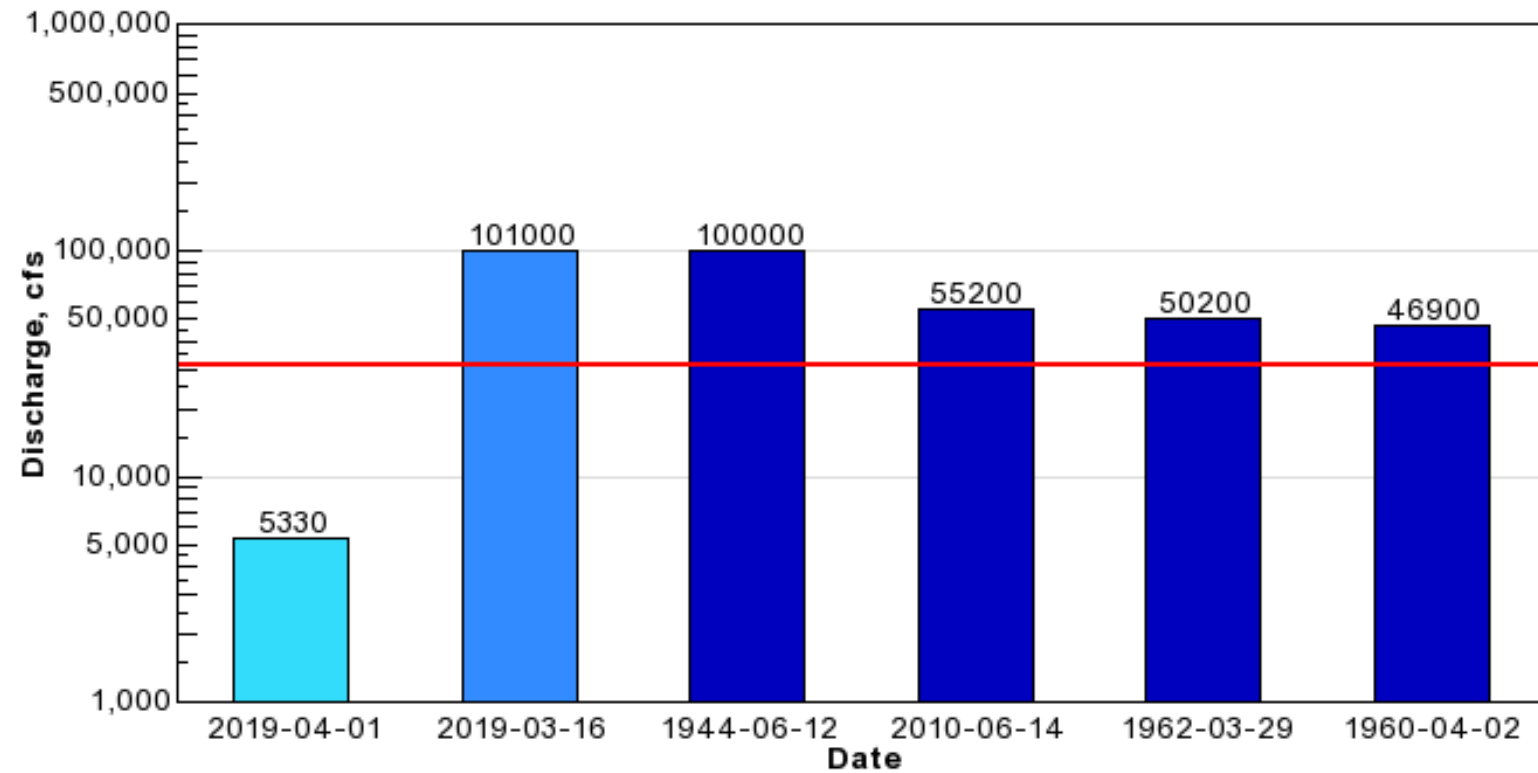


Lee Valley, Inc.

 Nathan Mueller, Cropping Systems Extension Educator

1899 to 2018

USGS 06800500 Elkhorn River at Waterloo, Nebr.

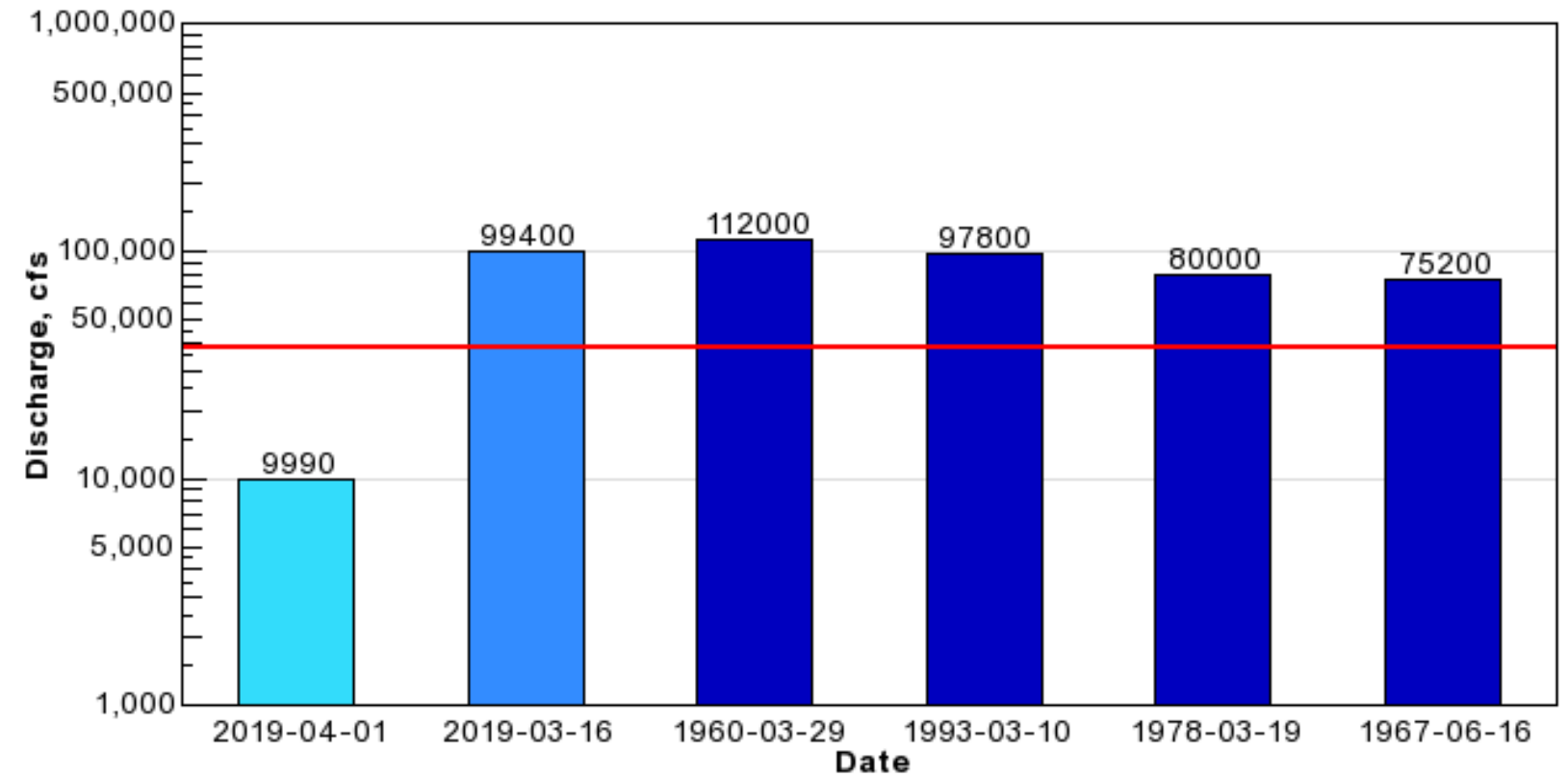


- Current Discharge 5330 cfs on 2019-04-01 20:15:00 (provisional)
- Recent Maximum Discharge (previous 365 days) 101000 cfs on 2019-03-16(provisional)
- Highest Recorded Peak Discharges
- Estimated Discharge 32257.84 cfs from NWS Flood Stage of 14 feet and USGS Rating Curve



1949 to 2018

USGS 06796000 Platte River at North Bend, Nebr.

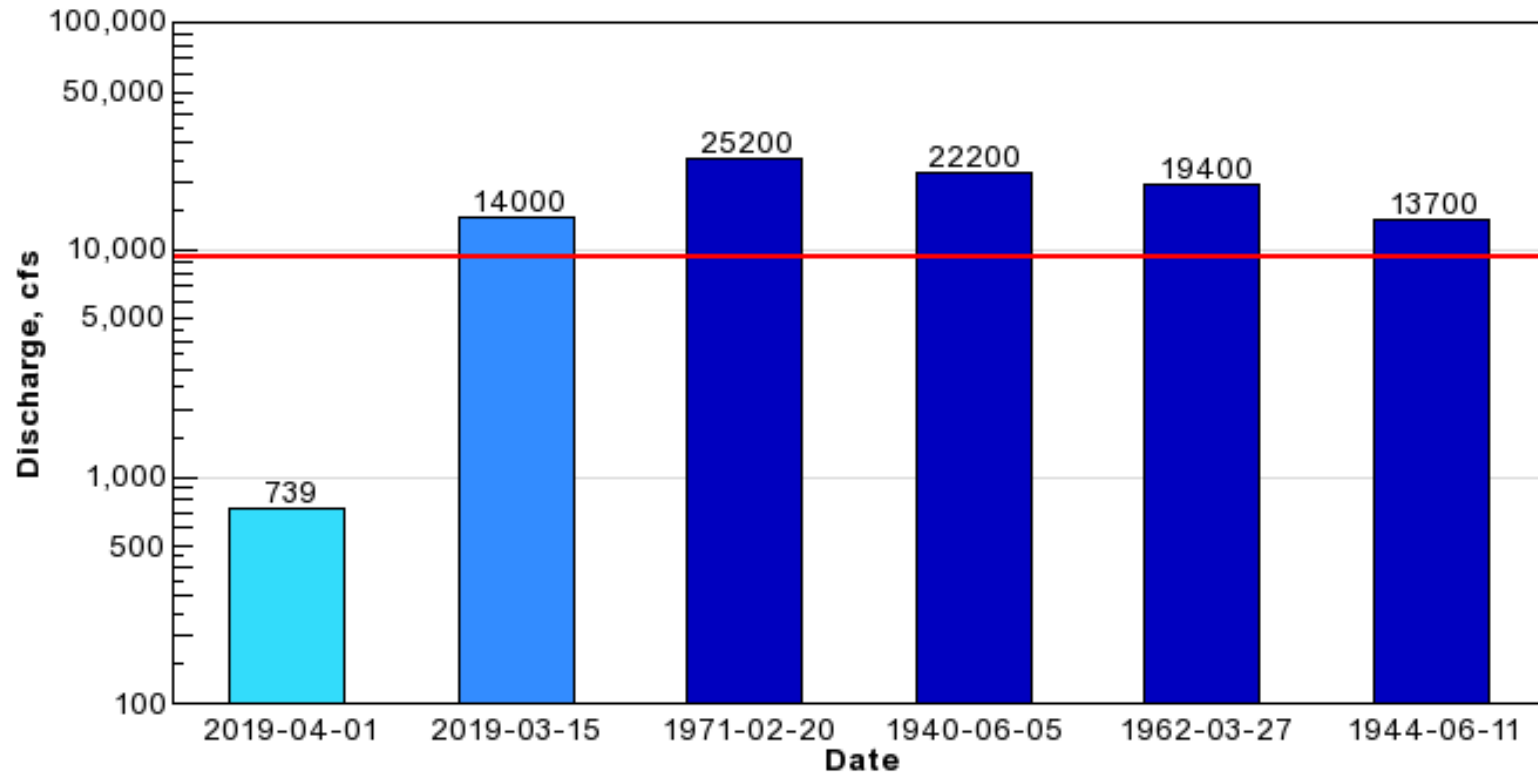


- Current Discharge 9990 cfs on 2019-04-01 20:15:00 (provisional)
- Recent Maximum Discharge (previous 365 days) 99400 cfs on 2019-03-16(provisional)
- Highest Recorded Peak Discharges
- Estimated Discharge 38623.47 cfs from NWS Flood Stage of 8 feet and USGS Rating Curve



1940 to 2018

USGS 06799500 Logan Creek near Uehling, Nebr.

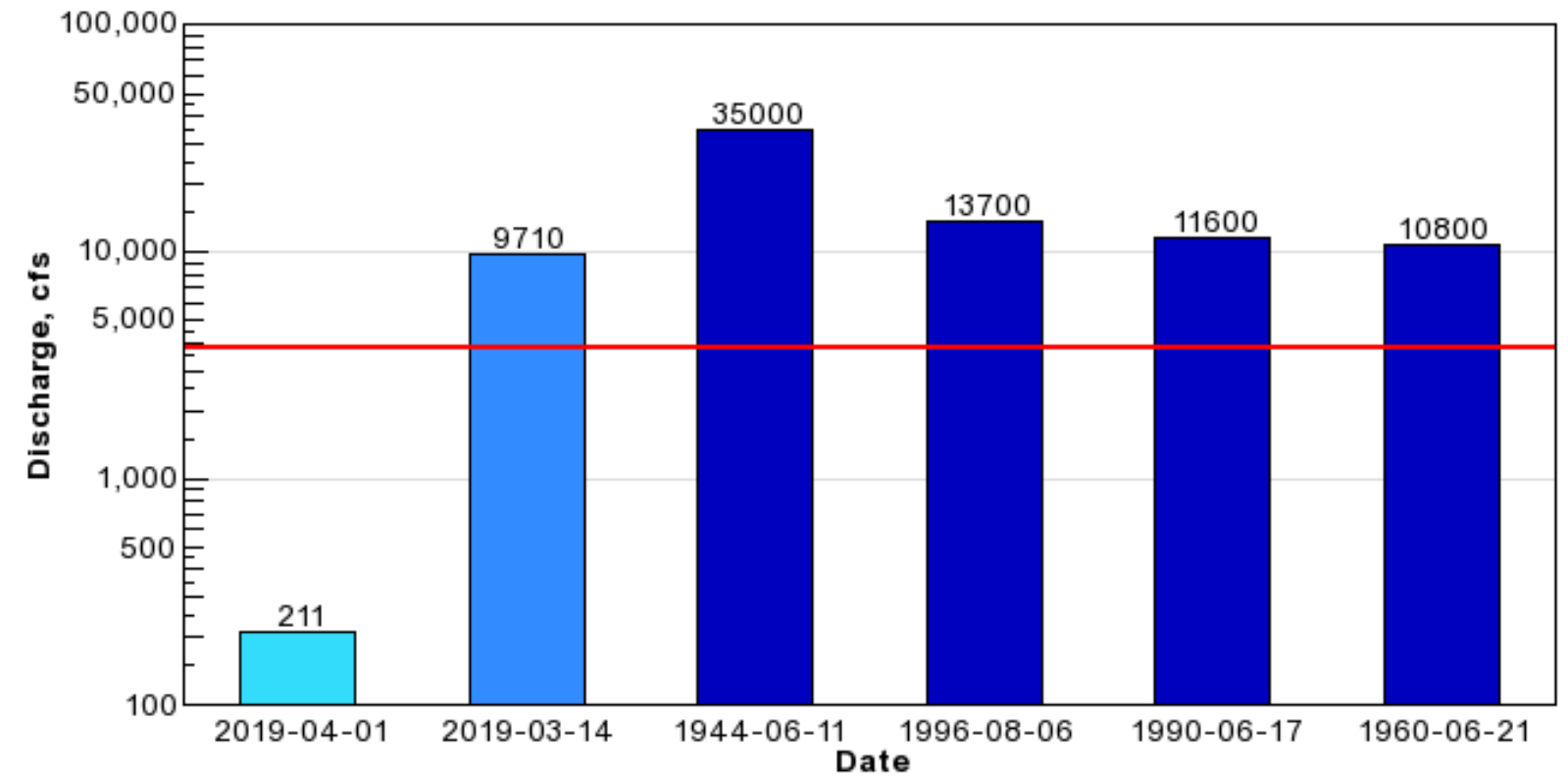


- Current Discharge 739 cfs on 2019-04-01 20:15:00 (provisional)
- Recent Maximum Discharge (previous 365 days) 14,000 cfs on 2019-03-15 (provisional)
- Highest Recorded Peak Discharges
- Estimated Discharge 9663.04 cfs from NWS Flood Stage of 18 feet and USGS Rating Curve

USGS WaterWatch

1944 to 2018

USGS 06800000 Maple Creek near Nickerson, Nebr.



- Current Discharge 211 cfs on 2019-04-01 20:45:00 (provisional)
- Recent Maximum Discharge (previous 365 days) 9,710 cfs on 2019-03-14 (provisional)
- Highest Recorded Peak Discharges
- Estimated Discharge 3845.51 cfs from NWS Flood Stage of 11.5 feet and USGS Rating Curve

USGS WaterWatch



Lee Valley, Inc.

Flooding in Nebraska

Whether it's a flash flood or a slow onset flood, excessive amounts of water can cause significant damage. Nebraska Extension is your trusted source for flood-related information. Our campus and county-based experts are ready to help you get the answers you need.

[Donations & Volunteering](#)

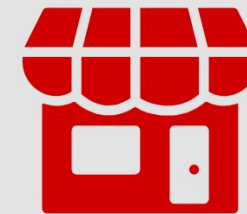
Resources



Families & Individuals



Homeowners



Businesses & Communities



Agriculture

[EMAIL US](#)



Lee Valley, Inc.

Individuals & Families

[4-H Flood Resources](#)

Coping with Stress in the Family

Flooding can cause stress in many families. For some it may be more than they can handle alone.

Resources: Check out local services that can help you and your family cope with the stress. Some examples follow:

- Local grief counseling services -- Many local hospitals offer support groups. In addition, members of local Ministerial Associations may have members dedicated to grief support.
- Regional behavioral health care providers. [Check out the Nebraska Network of Care for Behavioral Health](#) map that serves your region, from the Department of Health and Human Services.
- [Community Action Agencies](#) sometimes have staff available to provide mental health services.

Individuals & Families

[Children & Families](#)

▸ [Family Financials](#)

[Food Safety](#)

[Food Access](#)

[Health / Hazards](#)

[Legal Aid](#)

EMAIL US



Lee Valley, Inc.

Homeowners

Use the information here and the following pages to clean and manage your home after a flood.

Who's Knocking At Your Door

After a flood disaster, expect multiple visitors who will want to help you recover. It's common for multiple visitors to perform damage assessments on your home. No matter who's knocking, always ask for identification and the purpose of the visit. Never give out personal information such as your Social Security or bank account number. Government officials will never ask for money and you should never pay for their service.

ENGLISH

SPANISH

Applying for SBA Disaster Loans

SBA disaster loans are the primary source of money to pay for repair or replacement costs not fully covered by insurance or other compensation. Use these handouts to learn more about the SBA assistance program.

Homeowners

[Cleaning Up After a Flood](#)

[Preparing Your Home for Flooding](#)

[Well Water Safety After Flooding](#)

[Managing Septic Systems](#)

[Saturated Soil Risk](#)

[Propane Tanks](#)

[Gardens, Trees & Landscapes](#)

EMAIL US



Lee Valley, Inc.

Livestock

Flood Resources for Livestock

Cattle Producers Post Flood Checklist

A list of things for cattle producers to consider when dealing with the aftermath of the flood.

Dealing with flooded hay and grain **New**

This article outlines the considerations for determining if wet feed and hay can be used.

Disposal of Flood Soaked Grains and Forages **New**

This article describes how to dispose of feeds that have been exposed to contaminated flood water.

Feeding Cows After the Flood **New**

This article outlines how to supplement cows in early lactation receiving medium quality grass hay to meet their nutritional requirements.

Agriculture

[Crops](#)

[Livestock](#)

[Horses](#)

[Fruits, Vegetables and Alternative Crops](#)

[Farm Safety](#)

EMAIL US

- **Dealing with Flooded Hay and Grain**
- **Feeding Cows After the Flood**
- **Reclaiming Flood-Damaged Pastures and Forage Production**
- **Emergency Carcass Disposal**
- **Emergency Holding Pond Management**



Courtesy of Angie Lange



Lee Valley, Inc.

Crops

Initial Recovery

Returning to the Farm after a Flood. Disaster recovery can be as dangerous as the disaster itself, especially on farms and ranches where machinery and equipment, livestock, and agricultural chemicals are displaced and co-mingled. Recommendations from eXtension.org.

Repairing Flood-Damaged Fields. Lessons learned from the 2011 Missouri River flood in Nebraska and Iowa offer valuable information for growers initiating recovery measures for the 2019 flood.

Salvaging Flood-Damaged Agricultural Buildings and Farmstead Considerations. How to assess flood damage to the interior and exterior of farm buildings, including what to look for now and what could weaken the structure or cause health concerns later.

Flooding and Stored Grain. This Iowa State University Extension resource offers recommendations for salvaging as much quality stored grain as possible and how to dispose of contaminated grain.

Grain Vacuum Services/Rentals/Suppliers. Key points for managing stored grain that

Agriculture

[Crops](#)

[Livestock](#)

[Horses](#)

[Fruits, Vegetables and Alternative Crops](#)

[Farm Safety](#)

EMAIL US

- **Repairing Flood-Damaged Fields**
- **Management Recommendations for Irrigation Equipment Affected by Flooding**
- **Should Leases be Adjusted for Flood-Damaged Farm Ground?**
- **Grain Vacuum Services/Rentals/Suppliers**



Lee Valley, Inc.

Hay, Fence, and Feed Donation and Distribution

- Christensen Field in Fremont – Small hay bales and horse feed
- Central Plains Milling in Howells – Feed and other cattle supplies



Hay and Fencing Supplies Donation Dropoff Sites



NEBRASKA
Good Life. Great Roots.
DEPARTMENT OF AGRICULTURE

DISASTER RELIEF INFORMATION SHEET

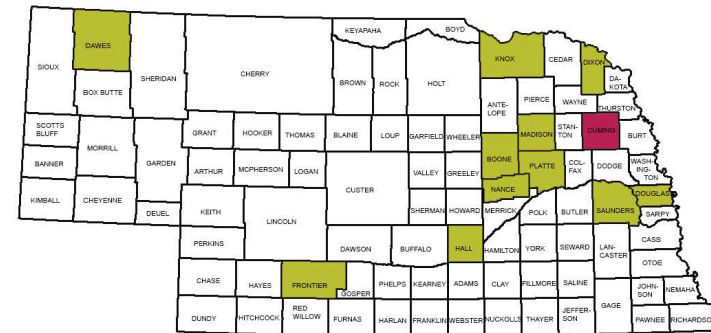
- Hay
- Vet Supplies
- Assistance and support call lines
- Apply for relief funding

Hay Drop-Off/Pick-Up Points

VOLUNTEERS: If you are able to volunteer to load/unload or haul to nearby farms/ranches, call one of the following: Verdigre Livestock Market (Verdigre, NE), Nebraska State Fair/Fonner Park (Grand Island, NE), UNL Research Center at Mead (Ithaca, NE), and UNL Haskell Lab (Concord, NE).

DONATIONS: There is an urgent need for donations of barbed wire fencing, wooden posts, and T-posts, inquire at the location you contact.

OTHER AVAILABLE SUPPLIES FOR PICK-UP: Some sites indicate they have additional supplies available, such as bagged livestock feed, pet food, molasses licks, leather gloves, muck boots, etc. Contact individual sites for availability.



● Hay Drop-Off/Pick Up Location ● Vet Supply Drop-Off Location

Ag Park
822 15th St, Columbus, NE 68601
Contact: Brian Palmer
Phone: 402-270-4455

Albion Livestock Market
2518 Sale Barn Road, Albion NE 68620
** Call ahead with donation and delivery information. Collection hours are between 8 a.m. and 4 p.m. Material unloading equipment/operators provided. **
Contact: Desiree Mitchell
Phone: 402-992-3592

Contact: Nebraska Extension, Boone County
Primary: 402-395-2158
Secondary: 402-741-0384

Donations of large round/small square hay and fencing materials will be collected across the road south of the Albion Livestock Market.

Chance Ridge
506 Skyline Road, Elkhorn, NE 68022
** Accepting big round and small square bales. Drop-offs accepted by calling ahead. **
Contact: Autumn Rock at 402-320-4398 or Nick Goldapp at 402-639-7769

Has hay, feed and grain available for those in need.

Dawes County Fairgrounds
2009 E Gordon Ave, Chadron, NE 69337
** Call to set up delivery. **
Contact: Jack Arterburn
Cell: 308-249-3717
Dawes County Extension Office: 308-432-3373

- **March 16-22: Ag Rep for Dodge Count Emergency Operations Center (emergency hay supplies and livestock disposal support)**
- **March 22-31: Supporting Ag donations and distribution**
- **Information from this meeting posted online at croptechcafe.org**
- **Upcoming programs: Annual Forage Production on Cropland, Tentatively, April 9 at 1:00 pm**
- **Programs/meetings/services can be offered based on requests**



EXTENSION

FLOOD.UNL.EDU

Website: **flood.unl.edu**

Email: **floodresponse@unl.edu**

For help dealing with stress:

“Staying Connected During Tough Times”

Information will be posted at **croptechcafe.org**