

Crop Disaster Information Mtg.

Nathan Mueller

**Dodge County Extension Educator –
Cropping Systems & Ag Tech**

727-2775

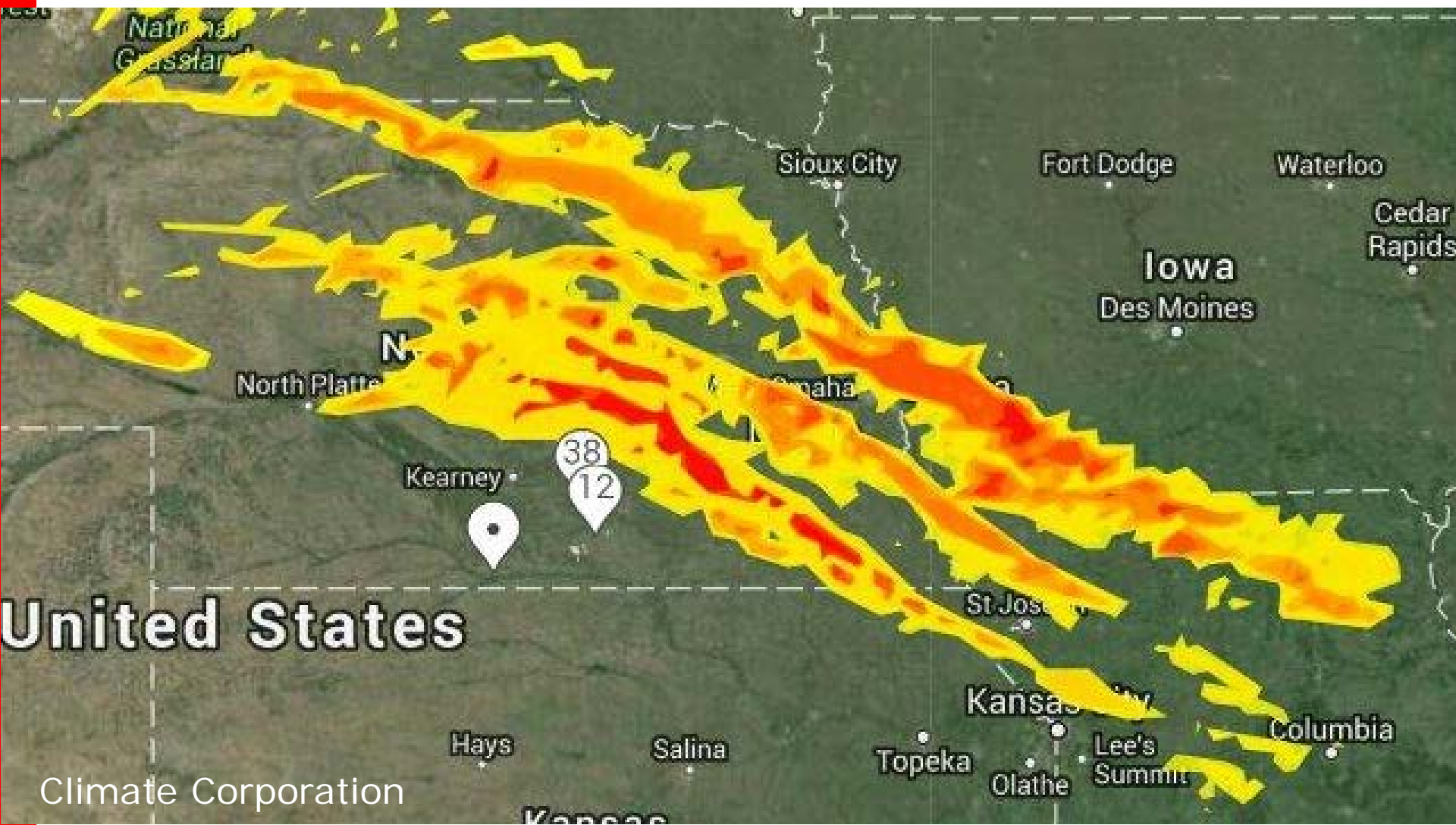
nathan.mueller@unl.edu

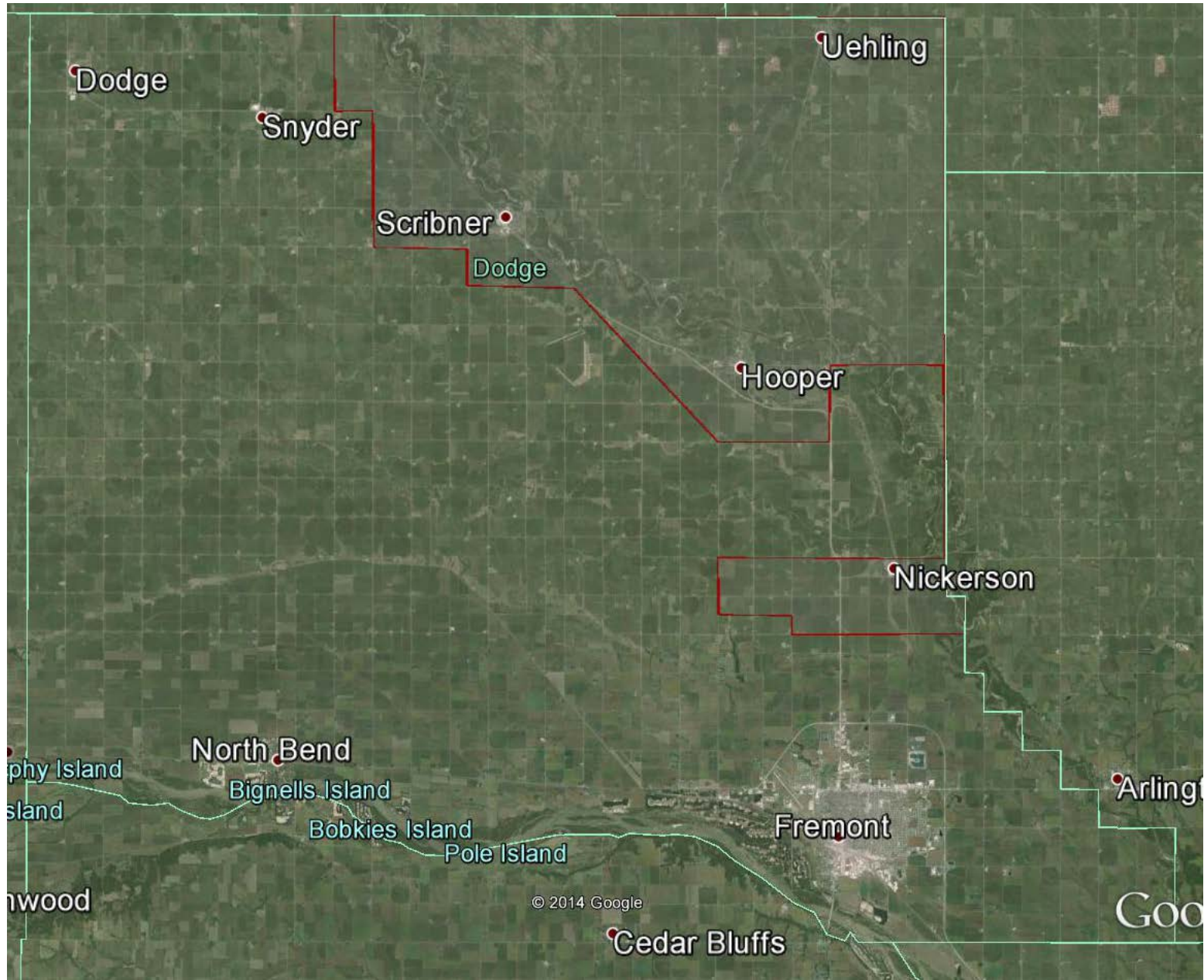
<http://croptechcafe.org>

Agenda

- Area of damage
- U2U Decision Support Tool – Corn GDD
 - <https://drinet.hubzero.org/groups/u2u/tools/gdd>
- Resources at CropWatch
 - <http://cropwatch.unl.edu>

Estimated Hail Map on June 3

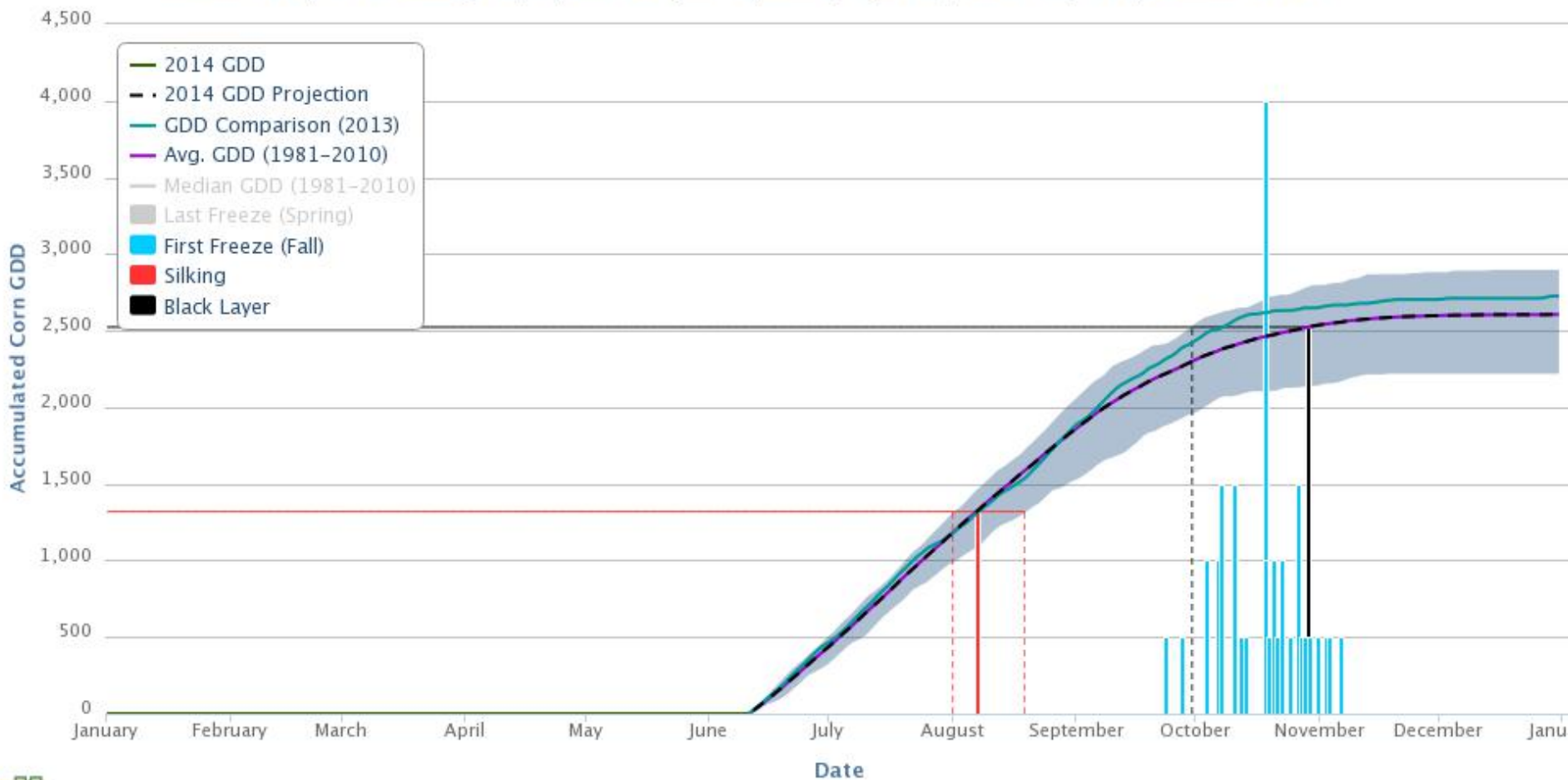




U2U Corn GDD Tool – 105 Day

Corn Growing Degree Day Tool

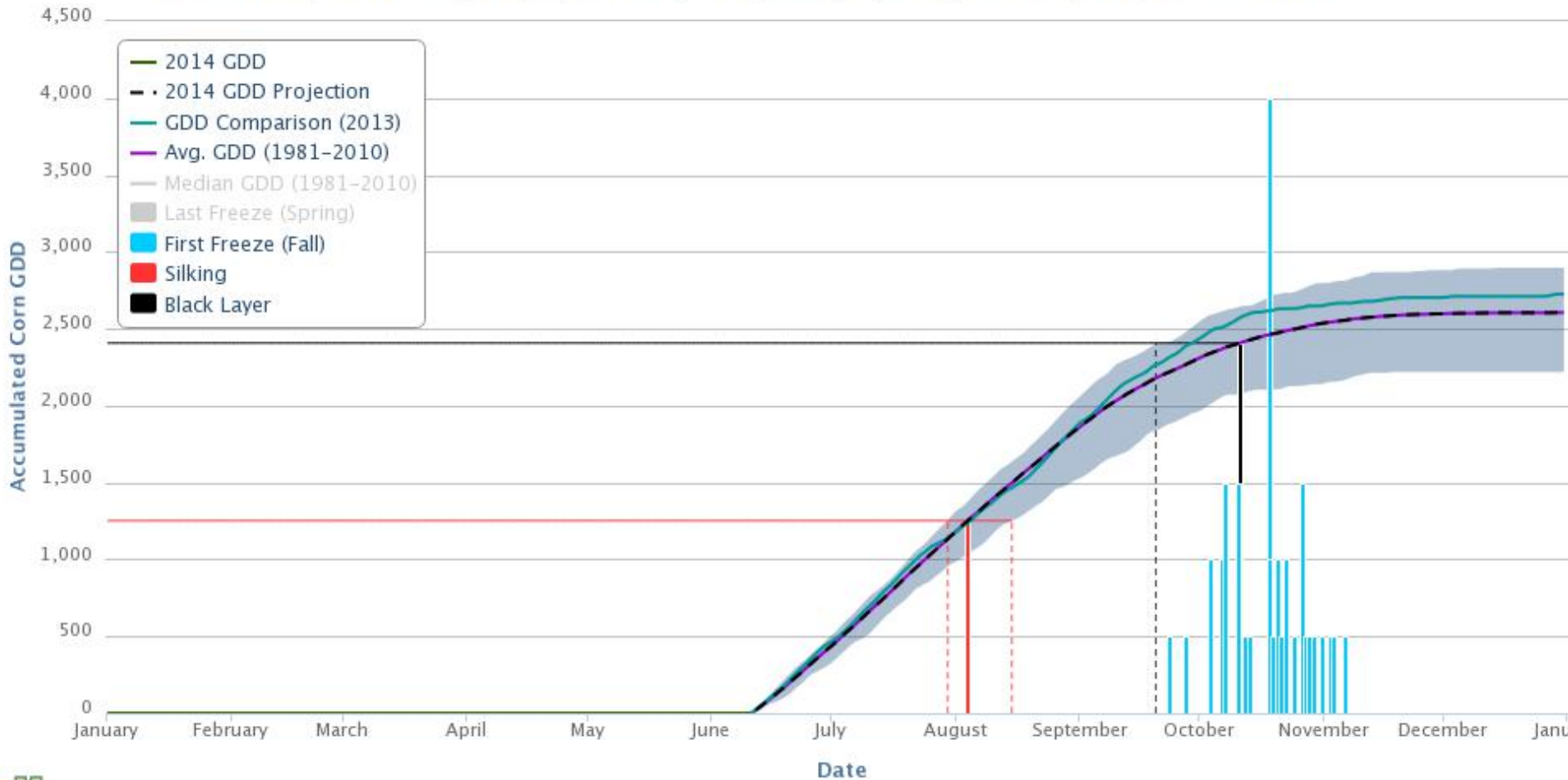
Location: 41.73, -96.51 in Dodge Co., NE, Start Date: June 11, Maturity Days: 105, Freeze Temp: 28°F, Variation: All Years



100-Day Corn

Corn Growing Degree Day Tool

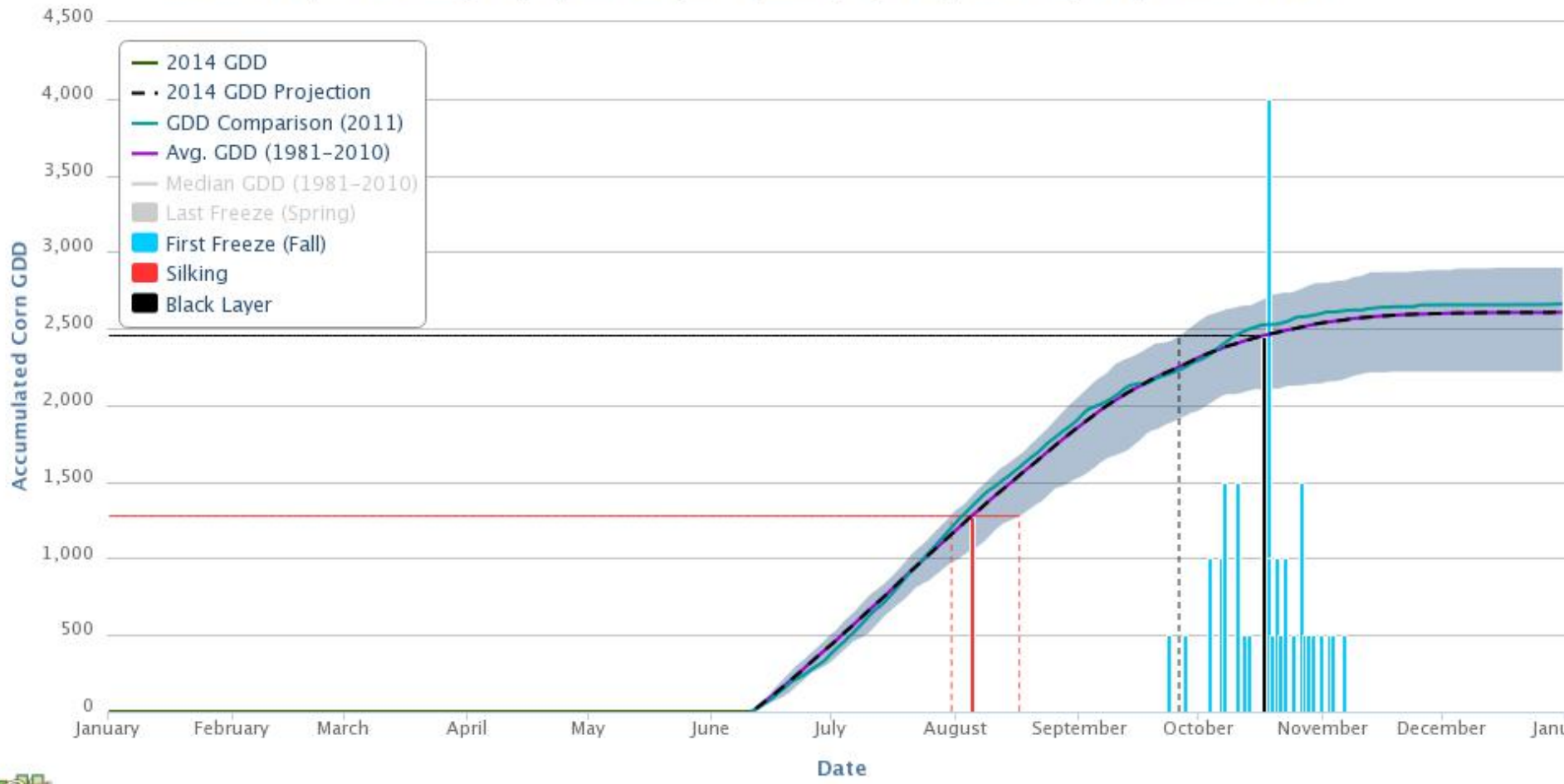
Location: 41.73, -96.51 in Dodge Co., NE, Start Date: June 11, Maturity Days: 100, Freeze Temp: 28°F, Variation: All Years



102-Day Corn, Reference Yr-2011

Corn Growing Degree Day Tool

Location: 41.73, -96.51 in Dodge Co., NE, Start Date: June 11, Maturity Days: 102, Freeze Temp: 28°F, Variation: All Years






Crop Watch

June 6, 2014

Post-Storm Updates

- [Assessing Hail Damage to Corn and Soybean](#)
- [Corn Development Staging Systems with Special Emphasis on Staging Following Early-Season Hail Events](#)
- [Fungicide Use in Corn after Hail or Wind Damage](#)
- [Replant Options Following Corn Pre-Emergence Herbicide Applications](#)
- [Assessing Hail Damage in Wheat](#)
- [Managing Hail-Damaged Alfalfa](#)
- [Crop Reports from Extension](#)
- [Look for Opportunities in Midst of Storm Damage](#). Conducting farm research on issues arising from storm damage.
- [Market Journal Goes to the Field to Assess Crop Damage](#)
- [Hail Information Meetings June 9 in South Central Nebraska](#). 9 a.m. near Bradshaw and 1 p.m. near Marquette.
- [Disaster Information Meeting June 10 at Uehling](#)

Related Resources

- [Evaluating Hail Damage to Corn \(EC 126\)](#) 
- [Evaluating Hail Damage to Soybeans \(EC 128\)](#) 
- [Evaluating Hail Damage to Grain Sorghum \(EC 129\)](#) 
- [When Runoff, Flooding Affect Private Drinking Water Wells \(IANR News\)](#)
- [How to Care for Storm-Damaged Trees \(Nebraska Forest Service\)](#)

Corn Production

- [Check Growth Stage as You Make Cropping Decisions](#)
- [Stalk Borer Scouting Recommended](#)
- [The Critical Period of Weed Control in Corn](#)

Wheat Production

- [Little Wheat Disease Found in South Central and Southeast Nebraska](#)



Evaluation Forms